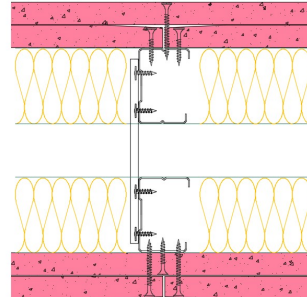


## TWC50-S-62(2x50)(200) - SPEEDLINE System Data Sheet - Version V1 (24-10-23)

Twin SPEEDLINE 50mm 'C' Stud Partition @600mm Ctrs, with 2x Siniat GTEC 15mm Fire Board each side, 50+50mm APR



### System Performance Breakdown

Fire Resistance:

BS476 Part 22:1987:

Test Ref & Date or Applied Ref & Report:

Max Height:

Thickness:

Duty Grade: BS 5234: Part 2:1992:

Sound Insulation:

120/120 Minutes (Integrity/Insulation).

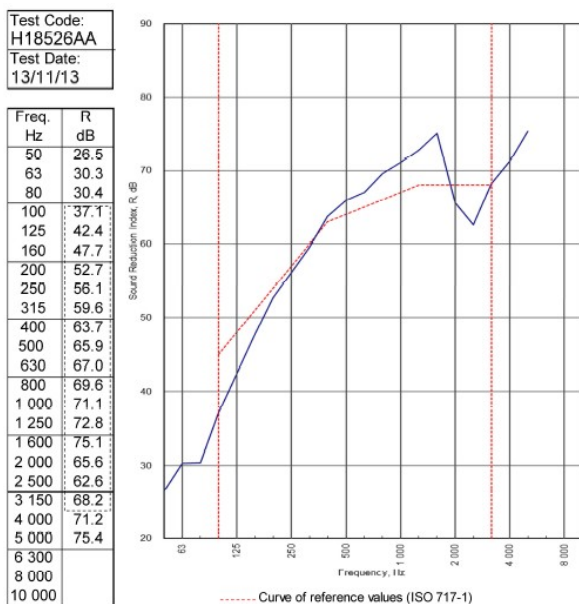
**BTC 17593FA - BRE Report P102396-1011C**

**Refer to Speedline Specification Clause**

**200 mm.** (At Base Track, Excluding Finishes)

**Severe - Annexes A-F**

**64  $R_w$ dB, -9Ctr** Date Tested or Assessed Against - 13/11/2013



Rating according to BS EN ISO 717-1:2013	<b><math>R_w</math> (C;Ctr) = 64 (-3;-9) dB</b>		
	Max dev. 7.9 dB at 100 Hz		
Evaluation based on laboratory measurement results obtained by an engineering method:	$C_{50-3150} = -6$ dB	$C_{50-5000} = -5$ dB	$C_{100-5000} = -2$ dB
	$C_{tr,50-3150} = -17$ dB	$C_{tr,50-5000} = -17$ dB	$C_{tr,100-5000} = -9$ dB

TESTED AT ONE OF THE UKAS ACCREDITED LABORATORIES BELOW

B.T.C (H-Ref on Graph)

B.R.E

AIRO

S.R.L

Customer: Metsec plc Hepsec Division

BTC 18526A: Page 9 of 12

